



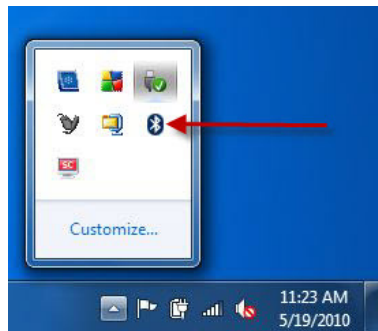
## Bluetooth Setup for eBeam Edge™ Windows 7

---

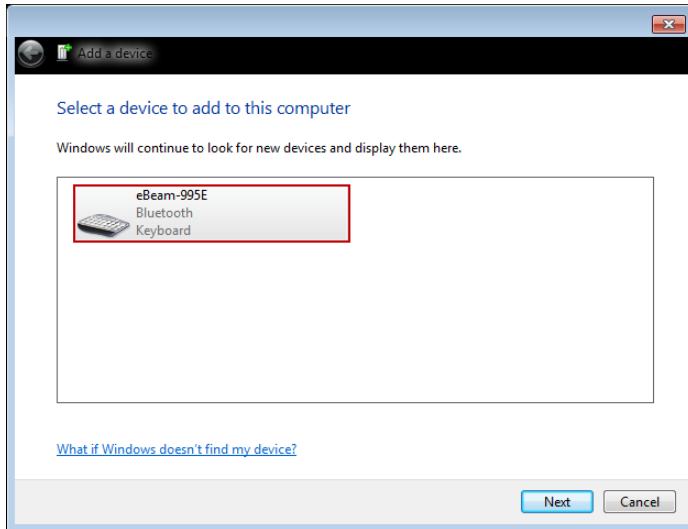
These instructions will help you set up your Bluetooth-enabled eBeam Edge on any computer with a Windows 7 operating system.

Before you begin, make sure that you have the latest eBeam software installed on your computer.

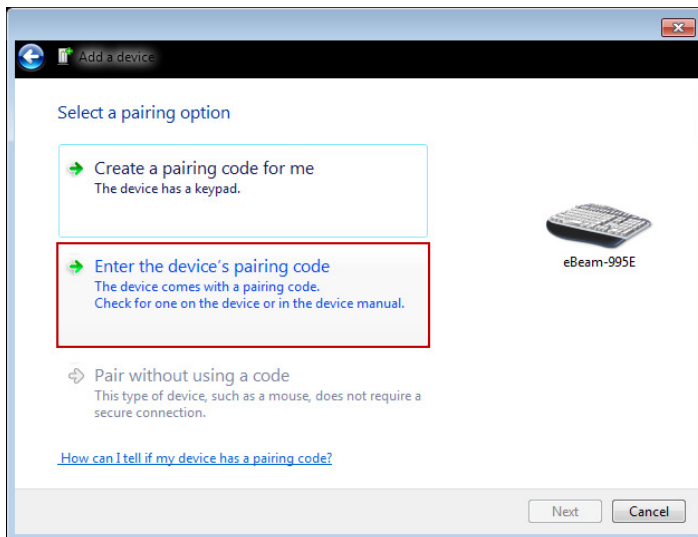
- Plug your eBeam receiver into a power outlet, and confirm that the light is glowing blue.
- Insert the USB Bluetooth adapter included with your system into an available USB port on your computer.
- Verify that your computer has recognized the adapter. Look for a Bluetooth icon in the system tray of your computer (located near the lower right-hand of the screen).



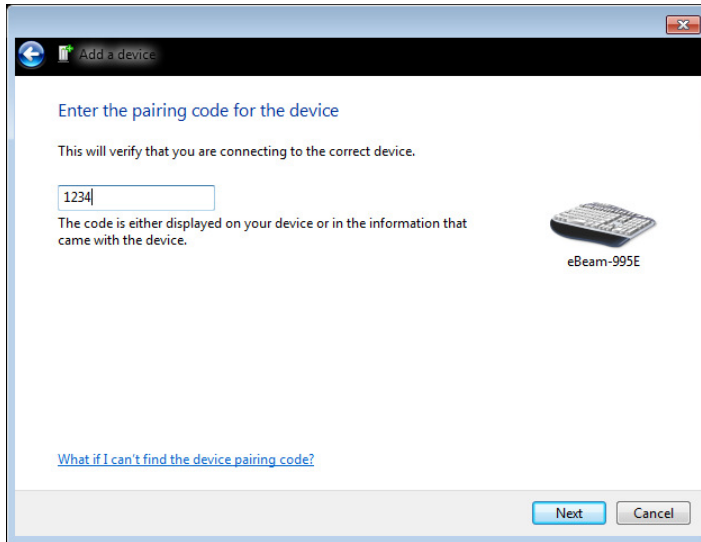
- If your computer does not recognize the Bluetooth adapter, call 888-99-EBEAM to further diagnose the issue.
- Right-click on the Bluetooth icon, and choose **Add a Device**.
- A dialogue box will appear with all available devices. Highlight your Bluetooth-enabled eBeam device and click **Next**.



- Note: Your device will be called eBeam-“XXXX”, “where “XXXX” is the predetermined number given to your specific eBeam receiver.
- Select the button **Enter the device’s pairing code.**



- Enter the passkey “1234,” and click **Next**.



- Note: This passkey will be requested whenever you pair the eBeam receiver with another computer.
- Verify that the glowing blue light on your eBeam receiver flashes four times. This indicates that your computer has made a connection with the receiver.
- A new dialogue box will appear on your computer screen confirming that your Bluetooth device has been added. Click **Close** to end the setup.