



Bluetooth Setup for eBeam System 3 Mac OS X 10.5

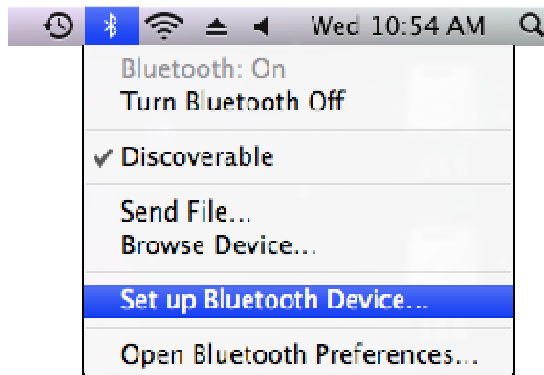
These instructions will help you set up your Bluetooth-enabled eBeam System 3 on a Mac OS X 10.5.

Before you begin, make sure that you have the latest eBeam software installed on your-computer.

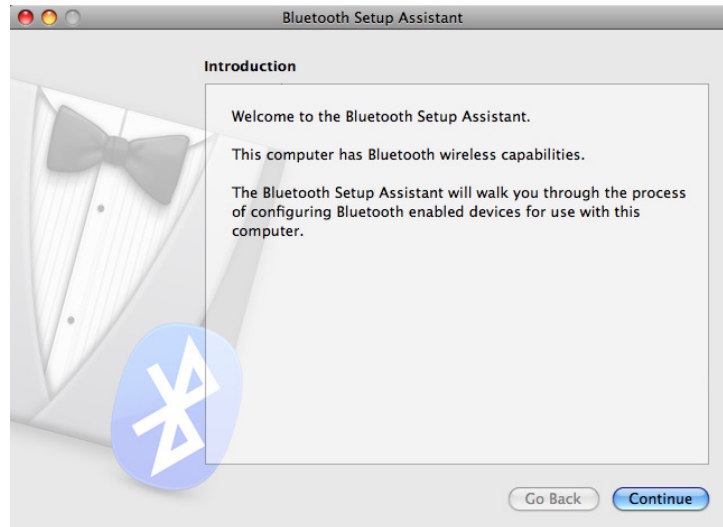
- Plug your eBeam receiver into a power outlet, and confirm that the light is glowing blue.
- Turn on your computer's built-in Bluetooth by selecting **Bluetooth: On** from the **Bluetooth Icon** in the **Mac Menu Bar**.



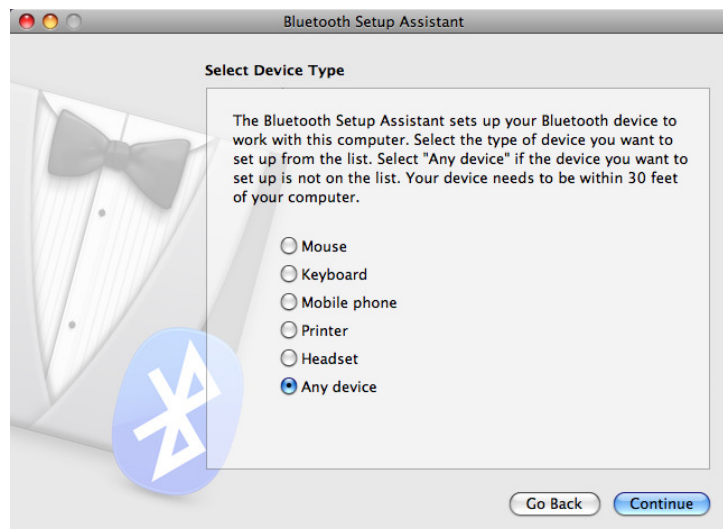
- Select **Set up Bluetooth Device** from the Bluetooth Icon in the Mac Menu Bar.



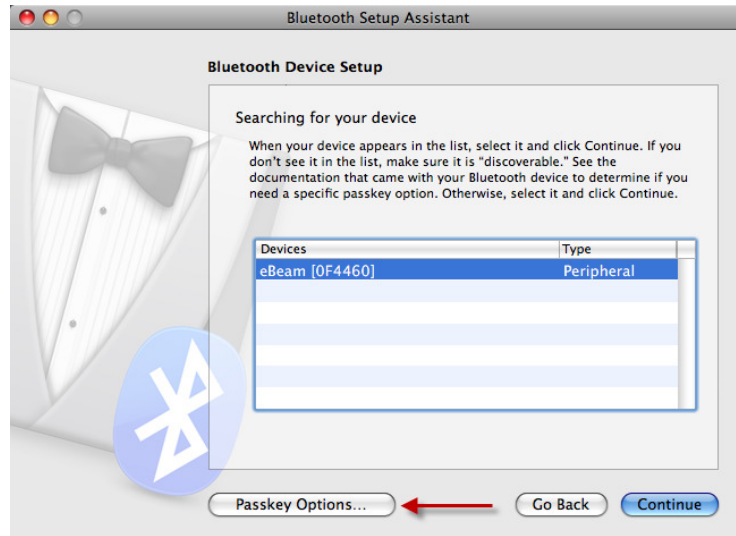
- You will start the Bluetooth Setup Assistant. Click **Continue**.



- Select the button next to “Any Device” and click **Continue**.

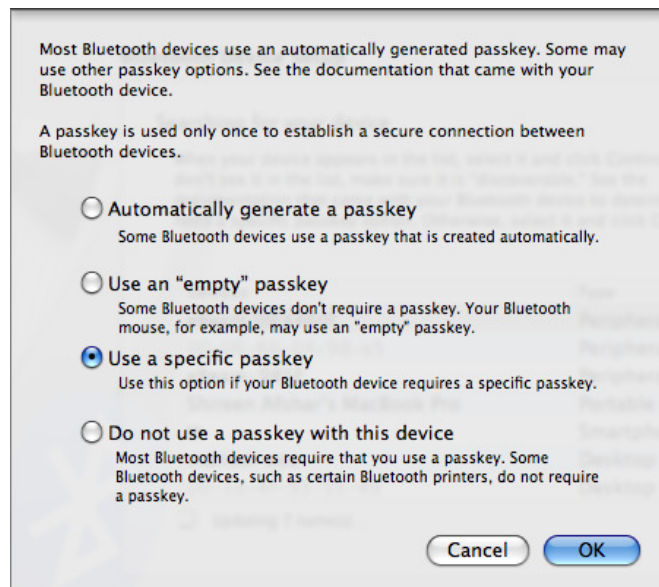


- Highlight your interactive receiver, and click **Passkey Options**.

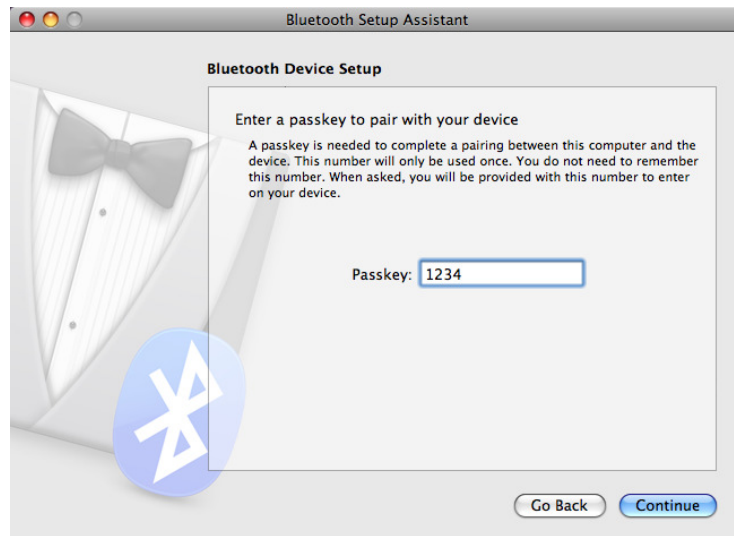


- Note: Your device will be called eBeam [xxxxxx], where [xxxxxx] is the predetermined number given to your specific eBeam receiver.

- Select the button next to “Use a specific passkey” and press **OK**. Then click **Continue** twice.



- Enter the passkey “1234” and press **Continue**.



- A dialogue box will appear confirming that your Bluetooth device has been paired to your computer. Select the **Quit** button.